

Finis h es

lapalma

OUTDOOR

Finishes

Lapalma srl si riserva il diritto di apportare modifiche tecniche e dimensionali e di introdurre miglioramenti che potrebbero cambiare l'estetica dei prodotti presentati in catalogo. I riferimenti colore stampati non sono vincolanti.

Lapalma srl reserves the right to alter the technical and dimensional specifications given in this publication and to introduce improvements that may change the aesthetics of the products shown in this catalogue. The printed colours hues are not binding.

Lapalma srl behält sich das Recht vor, jederzeit Veränderungen an den technischen Details und den Dimensionen der Produkte vorzunehmen und Verbesserungen einzuführen, die die Ästhetik der Produkte verändern können. Die Farbtöne der Abbildungen können von den tatsächlichen Farben der Produkte abweichen.

Lapalma srl se réserve le droit d'apporter des modifications techniques et de dimensions ainsi que d'introduire des améliorations qui peuvent changer l'esthétique des produits présentés. Les tonalités imprimées n'engagent pas la société.

Lapalma srl se reserva el derecho de cambiar tamaños y especificaciones técnicas de los productos listados en esta publicación, así como el de introducir mejoras que puedan cambiar la estética de los mismos. Por favor tengan en cuenta que los colores de los tejidos mostrados en fotografía no son totalmente fidedignos.

FENIX®

FENIX®

Fenix® is an extremely pleasant material ideal for all tops thanks to its contemporary rigour and simplicity. It is resistant, soft to the touch, fingerprint proof and slightly opaque, a characteristic that allows it to absorb light and make the time we spend at our tables even more enjoyable.

Fenix® is made of 70% layers of paper. The inner layers are hardened with thermosetting resins, the outer ones with latest generation acrylic resins. Heat and pressure compact the multilayer structure and make it the protagonist of any outdoor space in all weather conditions.



WOODS

LEGNI

Wood is the “nature” of Lapalma, with its warm, embracing and contemporary yet ancient appeal. With its deep respect for environmental balance, Lapalma selects only wood of certified origin, according to the main Chain of Custody control standards (FSC). The most widely used material for its outdoor collections is Iroko, a wood rich in tannin and therefore highly weather-resistant. Its physical and mechanical properties result in products with remarkable appeal and durability.

It comes originally in golden shades that tend to darken over time and acquire grey and brown nuances. Each product is a unique piece thanks to rich and original veining, knots and small imperfections, which confirm the natural origin of solid wood.

In outdoor environments, with much exposure to the sun and rain, Iroko wood - also called "greasy wood" due to its resistance to water and humidity - is subject to slow ageing, which can sometimes cause small cracks and fissures. It is not a defect, but proof of authentic and always exciting vitality.



MARBLES AND CONCRETE

MARMI E CEMENTO

TheLapalma communicates with its classic appeal, presenting in its collections the most precious material of Italian art and architecture, marble. Resistant to weather conditions and temperature changes, and always extremely elegant, marble is available in two versions: white Carrara marble and black Maquinia marble with subtle light nuances.

Cement represents contemporary style and is used for the bases in our collections due to its extraordinary resistance to weather conditions. Each product comes from a mould and preserves the artisan charm of a unique piece. It is then fibre-reinforced, finely sandblasted and treated with the most effective additives to resist any staining agent.



METALS

METALLI

In more than forty years of research, we have developed outstanding experience in high-performance metalworking, making it the hallmark of our outdoor furniture.

Steel and aluminium are the two protagonists.

To guarantee the originality of our outdoor collections we have chosen AISI 316L and AISI 304 stainless steel. Both of them fall into the category of super alloys.

Their characteristics include resistance to weather conditions and corrosive substances in any natural environment, as well as being entirely rustproof. Lapalma furniture made of AISI 316L stainless steel is also ideal for the nautical market.

Aluminium is included in our outdoor collections due to its minimalist aesthetic appeal and high resistance to water and temperature changes. The die-cast aluminium legs of our sofas are a recognisable feature of Lapalma's style.

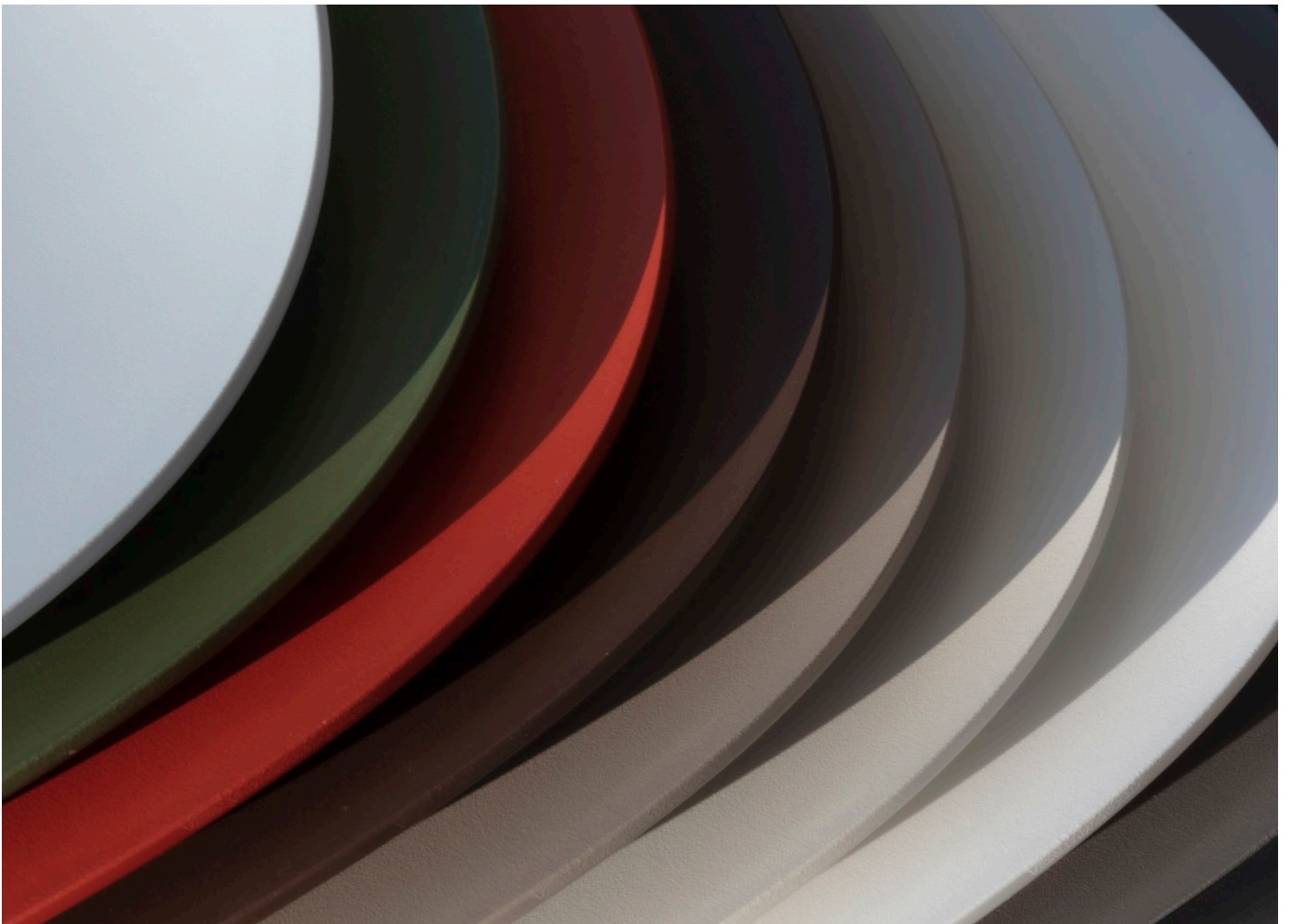
Polyester powder coating allows us to considerably extend the colour choice for metal components. The paint powder is electrostatically charged and sprayed on individual parts, which are then placed in an oven. The powder particles melt at a high temperature and create a continuous film due to coalescence. The fine-grained coating guarantees maximum resistance and is ideal for allowing our furniture to be used in all seasons of the year.



PLASTICS

PLASTICHE

We use the highest quality plastics in order to accurately express the creativity of our designers. The two main materials, polypropylene and Baydur®, are both extremely easy to clean and considerably resistant even in outdoor contexts. This choice is made even more effective by additives, which allow our furniture to be easily left outdoors in all seasons with long exposure to the sun and atmospheric and chemical agents. In keeping with our commitment to the environment, we have made a collection in 75-85% recycled polypropylene, obtained thanks to the recovery of plastics. We have chosen to keep it in its original colour and not to mix it with other pigments so that it can be recycled again.



FABRICS

TESSUTI

The aesthetic appeal of our outdoor collections is highlighted by a choice of fabrics that ensure uniqueness and comfort in all environments, from contract contexts to private homes. This tactile beauty, refined with original yarns and textures, conveys that Italian sensation of lightness and sophisticated simplicity.

The fabrics that cover padded elements by Lapalma do not require the use of glues and are tested and certified to withstand the most severe weather conditions.

Their excellence is enhanced by treatments that make all fibres resistant to UV rays and mould.

Lapalma uses batch-dyed acrylic fabrics. These include Iris fabric, which deserves a special mention as it is made of 100% recycled PET from the processing of bottles.

A virtuous circle is closed, even though the Iris fabric is entirely recyclable.



WINTER SET

WINTER SET

Lapalma furniture is like us, happy to live outdoors during the summer and to rest during the colder months. And just as our skin needs to be protected from winter temperatures and weather conditions, so outdoor furniture needs extra care in order to maintain its extraordinary comfort over the years.

Lapalma has created a collection of elegant custom-made, waterproof and extremely practical covers to protect all its products, from padded elements to chairs, stools, tables and sofas.

The covers are made of solution-dyed resin-coated polyester, which is resistant to salty sea air, UV rays and tearing.

Before covering your furniture, it is important to clean and dry it. We also recommend airing it regularly if the period of “rest” is lengthy. And when the first rays of sun and the first flowers in the garden appear, when you have your first coffee on the terrace and your first dip in the pool, we and our furniture will be together again.

Wonderful as we are!





Cat B - Iris RADA

Application

Contract and domestic use.

Tests

Abrasion
App. 100.000 Martindale rubs
EN ISO 12947

Pilling
dry 4-5, EN ISO 12945
wet 4, EN ISO 12945

Light fastness 7, ISO 105-B02

Flame resistance
EN 1021-1/2

BS 5852, flame
BS 5852, cigarette test

IMO FTP-8 Res.A652
UNI 9175, class 1 I-M
US Cal. Tech. Bull. 117.2013

Flame retardants

According to GB/T 24279-1:2018

Care

Dry clean or clean
with foam detergents.

Description

Composition:
100% PET RECYCLED
(made with recycled plastic bottles)

Width: 140 cm

Weight: app. 800 g/lin.m

Samples are purely indicative because of
natural inconsistencies that occur in the
raw materials. As a result there may be
small differences in the product delivered.



601



602



604



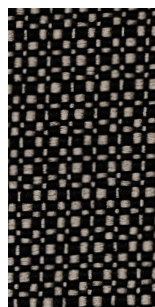
610



605



200



406



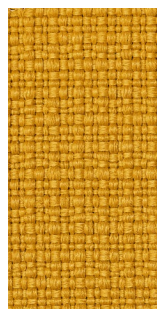
402



111



901



501



308



307



404



304



302



306



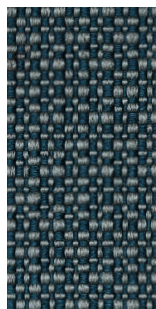
303



706



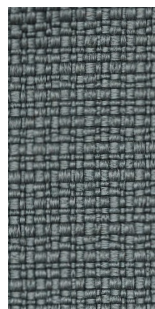
705



703



701



711



801



Cat B - Nattè SUNBRELLA

Application

Contract and domestic use.

Description

Composition:
100% Sunbrella® Acrylic
Width: 140 cm
Weight: app. 385 g/lin.m

Tests

Water-Repellent
Spray test ISO 4920 class 5
Colour fastness
UV indoor ISO105B02 class 8
Weather outdoor ISO105B04 1000H
Class 4-5
Dry friction ISO105X12 Class 5

Care

Dry clean or clean with foam
detergents.

Samples are purely indicative because of
natural inconsistencies that occur in the
raw materials. As a result there may be
small differences in the product delivered.



10020 140 White	10014 140 Nature	10021 140 Canvas	10150 140 Heather Chalk	10028 140 Heather Beige	10029 140 Heather Grey	10233 140 Pistachio	10232 140 Ivy
10064 140 Carbon Sky	10025 140 Frosty Chinè	10235 140 Amber	10234 140 Flamingo	10231 140 Carmine	10101 140 Tonka	10022 140 Grey Chinè	10155 140 Taupe Chalk
10065 140 Carbon Beige	10040 140 Nature Grey	10152 140 Graumel Chalk	10151 140 Linen Chalk	10059 140 Dark Taupe	10063 140 Charcoal Chinè	10030 140 Sooty	



Cat C - Lapalma Smart

Application

Contract and domestic use

Description

Composition:
100% SOLUTION DYED ACRILIC
Width: 140cm
Weight Gr./mtl.: 700

Tests

Shirinkage after dry cleaning
Warp: -1 % Weft: -1 %

Shirinkage after washing
Warp: -3 % Weft: -3 %

Resistance to PILLING
after 2000 cycles
Note 4 EN ISO 12945-2

Abrasion
20000 Cidli EN ISO 12947-2

Light fastness
Note 7/8 EN ISO105B02

Color fastness to washing
Note 5 EN ISO105C06

Color fastness to dry Cleaning
Note 5 EN ISO105D01

Color fastness
to crocking Test WET
Note 4/5 EN ISO105X12

Color fastness
to crocking Test DRY
Note 5 EN ISO105X12

Care

Cleaning: Vacuuming
Mount in moist condition.
Mildew growth is not promoted
by the textile but mildew may
grow on dirt and other foreign
substances if not removed.
Keep the textile dry to avoid
mildew spores to stick.

Samples are purely indicative because of
natural inconsistencies that occur in the
raw materials. As a result there may be
small differences in the product delivered.



211



213



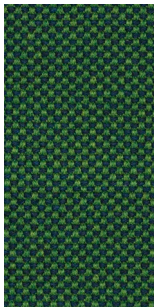
214



203



219



218



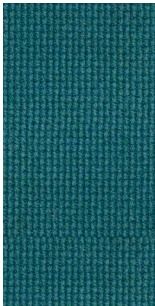
204



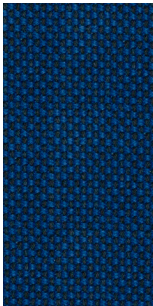
205



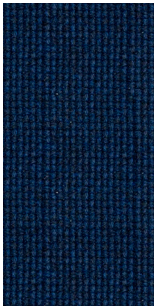
206



210



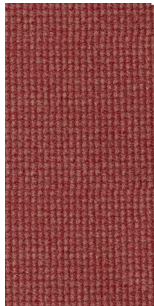
217



209



201



207



202



208



224



223

corda / cord / Schnur / corde / cuerda



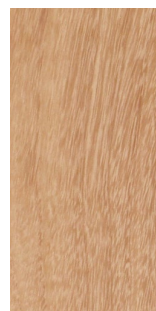
F5
lino



F8
tabacco



F1
black



RK
Iroko

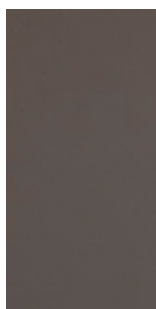
HPL 10 mm



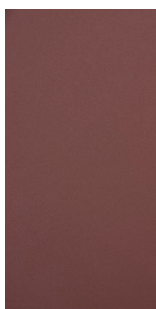
HFW
Fenix® bianco
Fenix® white
Fenix® weiß
Fenix® blanc
Fenix® blanco



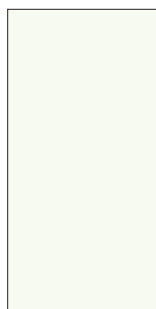
HFN
Fenix® nero
Fenix® black
Fenix® schwarz
Fenix® noir
Fenix® negro



HFG
Fenix® grigio
Londra



HFR
Fenix® rosso
Jaipur



H406
bianco
white
Weiß
blanc
blanco

metalli / metal / Metall / metal / metal



acciaio inox
micropallinato
stainless steel
sandblasted
Edelstahl
sandgestrahlt
acier inox microbillé
acero inoxidable
arenado

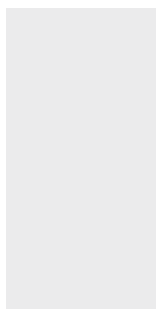
verniciature a polvere / powder coating / pulverlackiert / laqué en poudre / lacadura en polvo



05
black
RAL 9005



03
white
RAL 9016



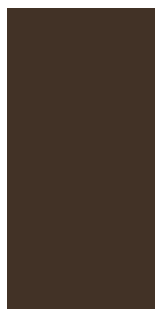
20
perla
NCS 1502Y



21
celeste
NCS 2010-B10G



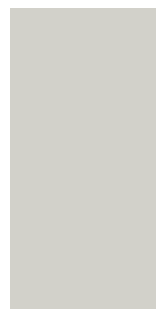
22
mattone
NCS 3560-Y70R



23
caffè
NCS 8010-Y50R



24
oliva
NCS 7020-G50Y

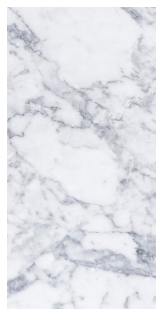


25
tortora
402C



26
antracite
finitura goffrata

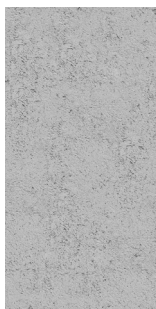
altre finiture / other finishes / weitere Ausführungen / autres finitions / otros acabados



bianco Carrara
white Carrara
Carrara-Marmor
blanc Carrara
blanco Carrara


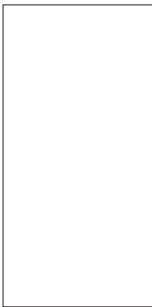
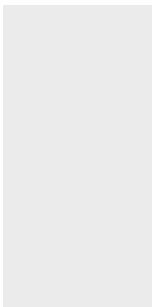
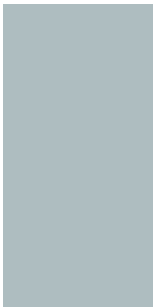

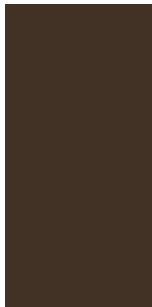

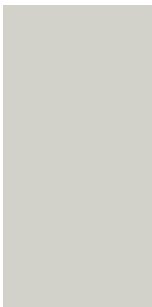


nero Marquina
black Marquina
Marquina-Marmor
noir Marquina
negro Marquina



cemento
concrete
Zement
béton
cemento

plastiche / plastics / Kunststoff / plastiques / plástica

							
1 polypropylene black	2 polypropylene white	4 polypropylene perla PP grigio chiaro S1502Y	5 polypropylene celeste PP azzurro S2010B10G	6 polypropylene mattone PP rosso S3560Y70R	7 polypropylene caffè PP bruno S8010Y50R	8 polypropylene oliva PP verde S7020G50Y	9 polypropylene tortora PP beige PAN402C



3
recycled grey
polypropylene

Application

Indoor and outdoor use.

Description

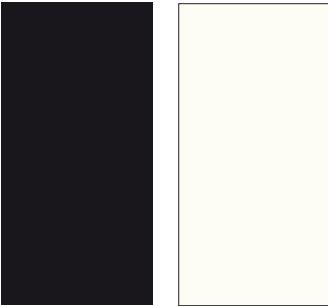
Recycled polypropylene is obtained thanks to a recycling process using up to 75% - 95% of recycled material.

Care

Dust with a soft and dry cloth for the normal cleaning. Never use abrasive or aggressive products like solvents, acid or basic solutions or ammonia. Any liquid spilt on the product must be wiped up immediately. Any changes in the surface and in colours may occur under particular conditions of weather exposure and cannot be considered a quality issue.

Samples are purely indicative because recycled polypropylene color can vary widely from grey to a lighter color.

Baydur®



N
Baydur® nero
Baydur® black
Baydur® schwarz
Baydur® noir
Baydur® negro

W
Baydur® bianco
Baydur® white
Baydur® weiß
Baydur® blanc
Baydur® blanco

poliuretano integrale morbido / polyurethane / Polyurethan / polyuréthane / poliuretano



PU
poliuretano grigio
polyurethane grey
Polyurethan grau
polyuréthane gris
poliuretano gris

PN
poliuretano nero
polyurethane black
Polyurethan schwarz
polyuréthane noir
poliuretano negro

lapalma

via majorana 26
35010 cadoneghe (PD), italy
t.: +39 049 702788
info@lapalma.it
www.lapalma.it